



# HOW-TO

## How-to Configure Autosaved Channels in ADU

Document version: 1.0

Firmware: 100.0

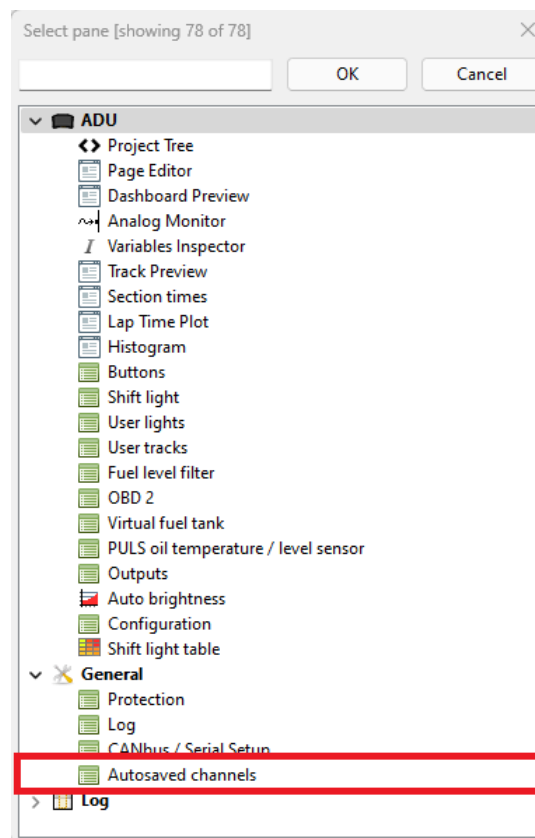
Published on: 19 January 2024



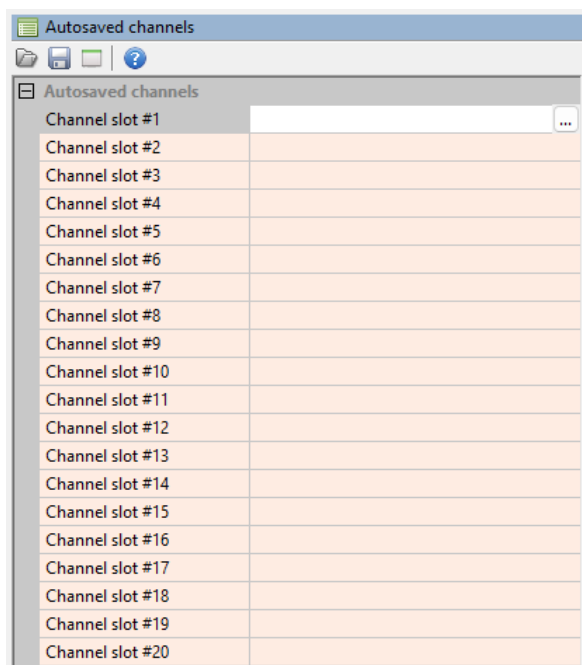
# 1. Description

The Autosave Channels feature enables you to store values for up to 20 channels, loaded when the device starts. These values are automatically saved every two minutes or during the device shutdown triggered by the ignition switch. This functionality proves useful in various scenarios, such as preserving, e.g., the state of the keyboard button. By doing so, you can easily recover the encoder's state after the device is turned on.

To open The Autosave Channels panel, press F9 and select it from the General category.



In the panel, select the channels you want to be autosaved.

**Note:**

To preserve values when shutting down the device, make sure the battery voltage remains connected, and turn off the device using the ignition switch.

Upon turning on the device, the autosaved channel values will be loaded into their respective channels. Subsequently, the evaluation proceeds as usual, meaning the loaded value will be replaced with any new data.

## 2. Document history

Version	Data	Changes
1.0	2024.01.19	Initial release