



HOW-TO

How-to Merge Projects in ADU

Document version: 1.1

Client: 100.0

Published on: 29 February 2024



1. Description

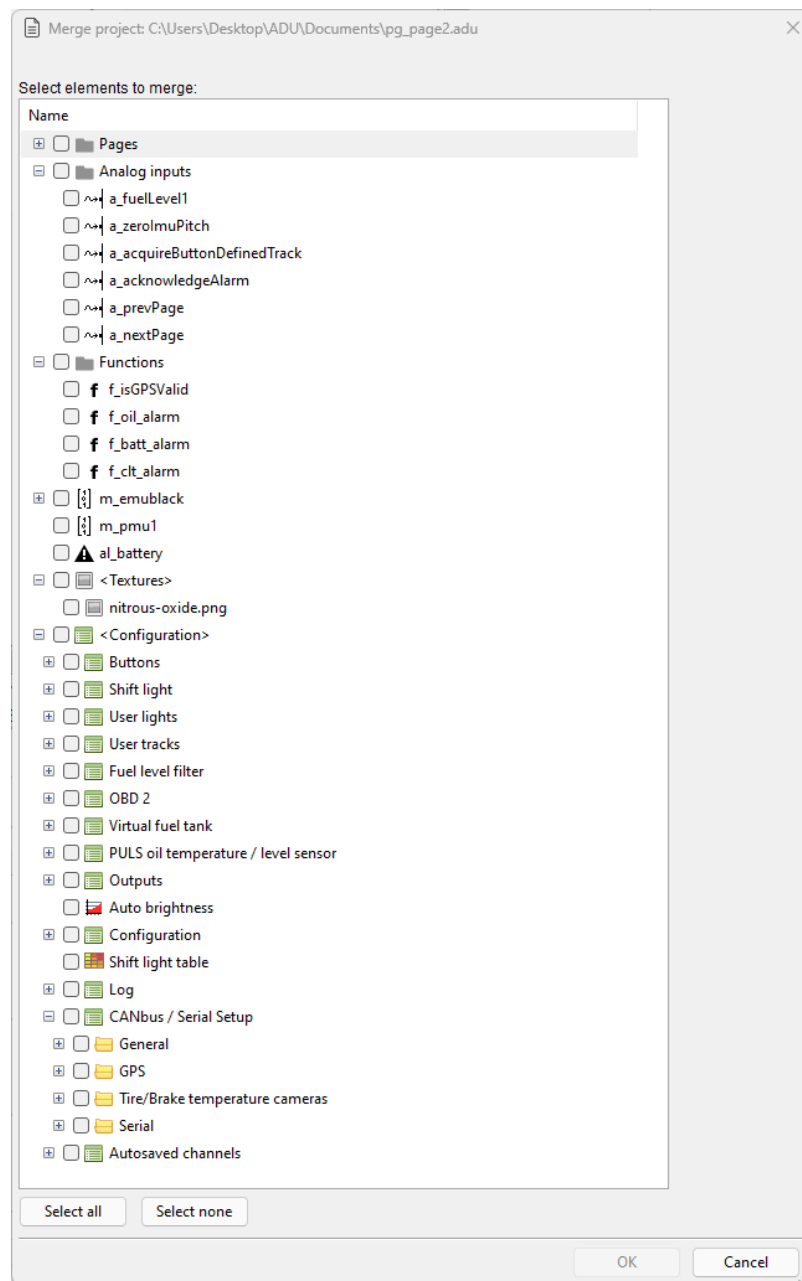
Merging projects enables you to pick specific elements from one project and integrate them into another.

In the document, the project you're currently working on will be named 'base'. The project you want to load the elements from, will be called 'incoming'.

All items from the Project Tree and the configurations can be merged between projects. This means all of the following:

- Analog inputs
- Digital inputs
- CANbus message objects
- CANbus inputs
- CANbus keyboards
- Enumerations
- Timers
- Tables
- Switches
- Numbers
- Functions
- CANbus exports
- Pages
- Alarms
- Textures
- Groups
- Configurations

To merge project select **File/Merge project** or press **Ctrl+M**. After selecting the incoming project, a dialog window will appear, displaying all elements from the incoming project available for merging:



After selecting individual elements or choosing all using the 'Select All' button, confirm your selection by clicking 'OK.' The selected elements will then be added to the Project Tree, and the chosen configuration settings will be applied.

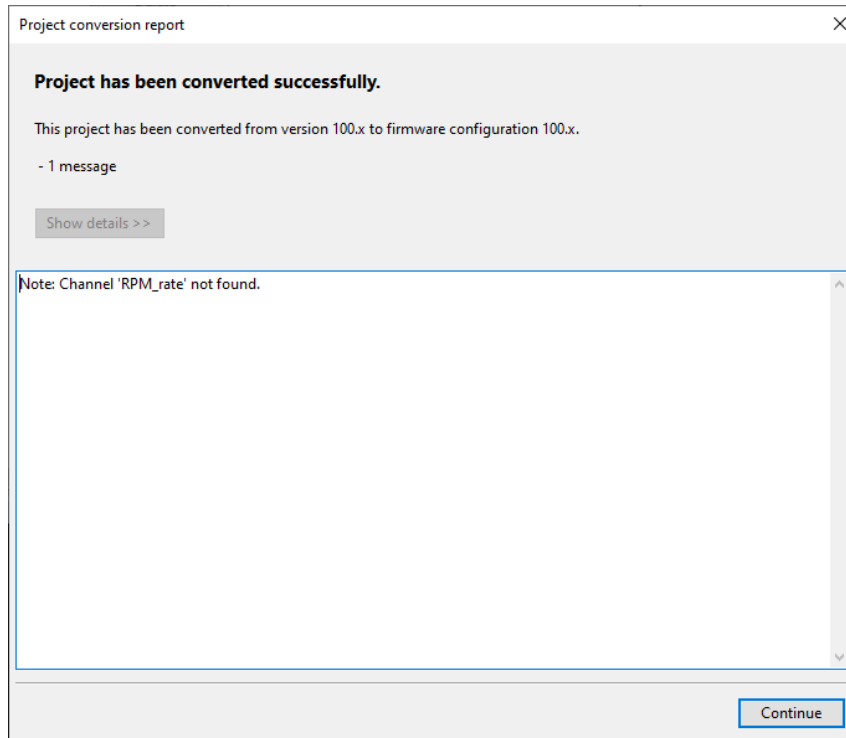
2. Resolving potential errors

Name conflict

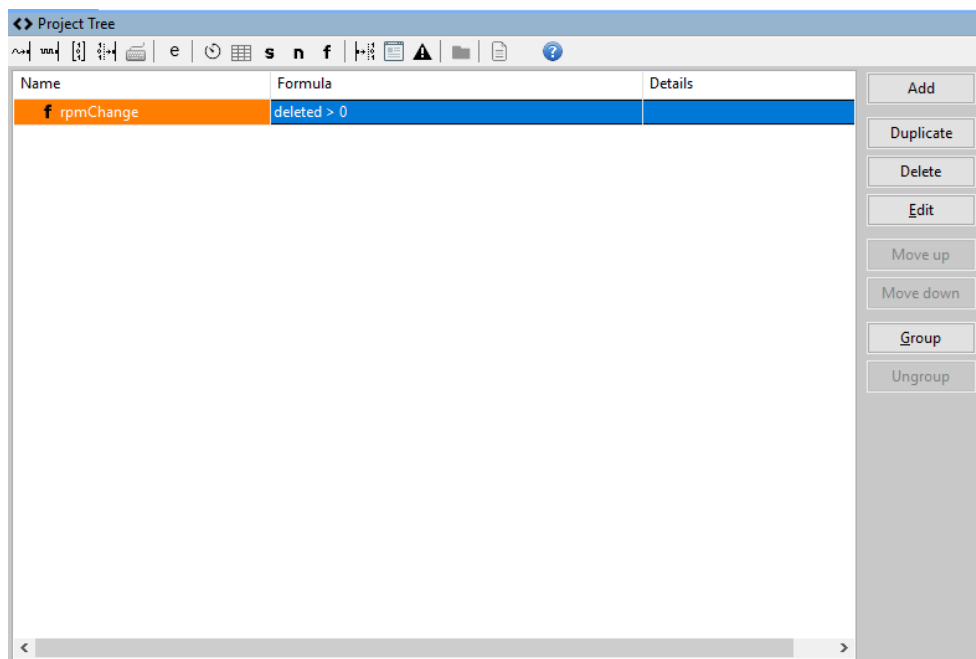
Name conflict is a situation where an incoming element has the same name as any element from the base project. In this case, the incoming element will be assigned a name with a '2' appended at the end.

Missing dependency

During the project merging process, you may encounter a missing dependency error. This occurs when an incoming element (e.g., a calculation) relies on another item not present in the base project. If such an error arises, you will be notified through the following window.



Despite this error, the affected element will still be loaded, and you have the option to manually resolve the missing dependency.



To prevent the missing dependency error, organize your projects using groups. Grouping related elements together makes sharing across projects easier. Choosing the entire group from the incoming project simplifies the process and reduces the chance of errors.

3. Document history

Version	Date	Changes
1.0	2024.01.19	Initial release
1.1	2024.02.29	Add the list of mergeable elements Separated a section on potential errors