

ECUMASTER ANDROID DASH 3 (BETA)

Ecumaster Android Dash 3 is a new version of Ecumaster dash application.

It was written „from scratch” and this application will be developed in the future to allow two way communication with EMU and EMU Black and motorsport-like display style will be implemented.

The software could be downloaded here:

<https://play.google.com/store/apps/details?id=pl.michalsulek.emudash3>

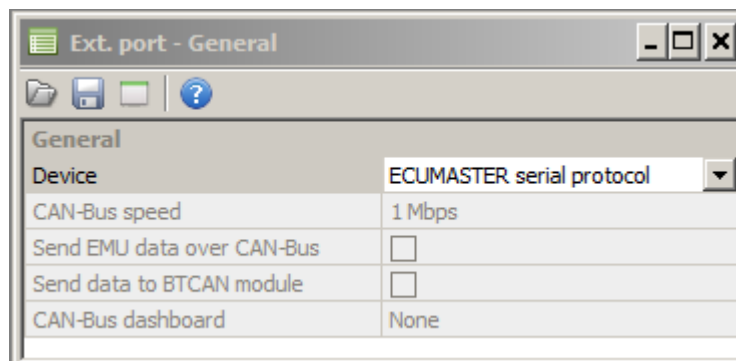
Software requirement

EMU CLASSIC

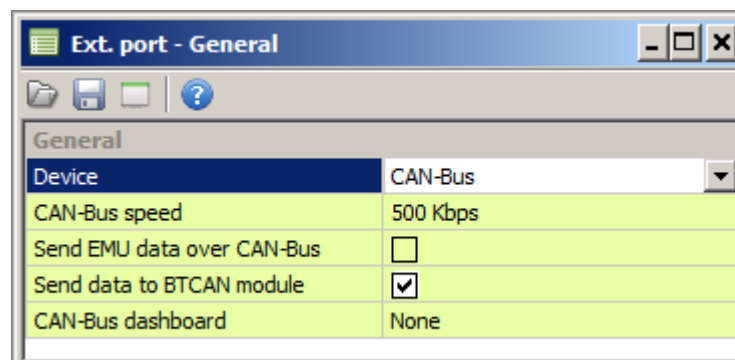
For EMU classic the firmware 1.206 or higher is required.

If data logger EDL-1 is used for Blue Tooth communication the minimal firmware version of EDL-1 is 1.07.

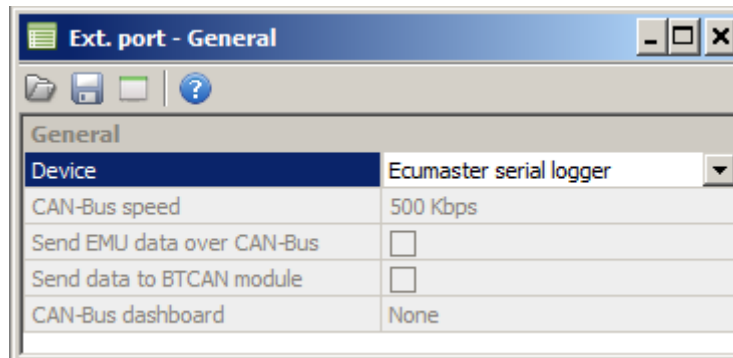
To enable sending data using BT Module connected to the external port the following option must be set:



To enable sending data using BT Module connected to the CAN BUS the following option must be set:



To enable sending data using EDL-1 data logger the following option must be set:



Dashboard 3 application allows to record incoming data. The saved logs are available in directory EMUDash3.

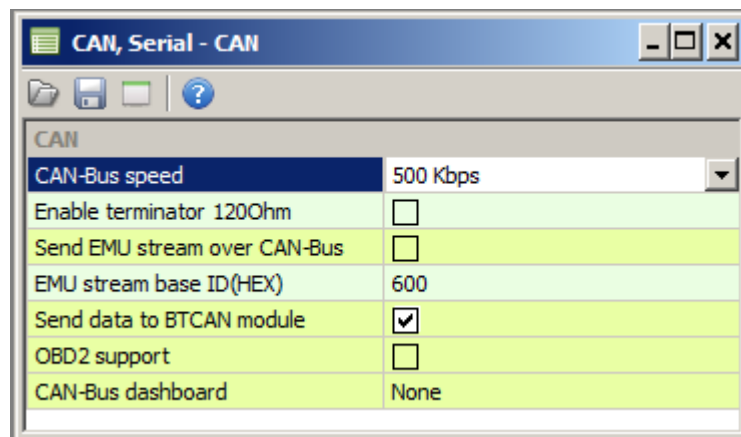
To import data to EMU Clinet application use option Files/Import log/Android dash log

EMU BLACK

For EMU BLACK firmware 2.06 or higher is required.

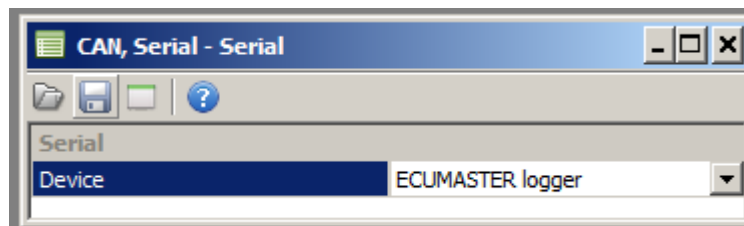
If data logger EDL-1 is used for Blue Tooth communication the minimal firmware version of EDL-1 is 1.07.

To enable sending data using BT Module connected to the CAN BUS the following option must be set:



Important: Enable terminator option might be required to terminate CAN-BUS. Refer to the CAN BUS topology documentation.

To enable sending data using EDL-1 data logger the following option must be set:



Dashboard 3 application allows to record incoming data. The saved logs are available in directory EMUDash3.

To import data to EMU Black Clinet application use option Files/Import log/Android dash log