



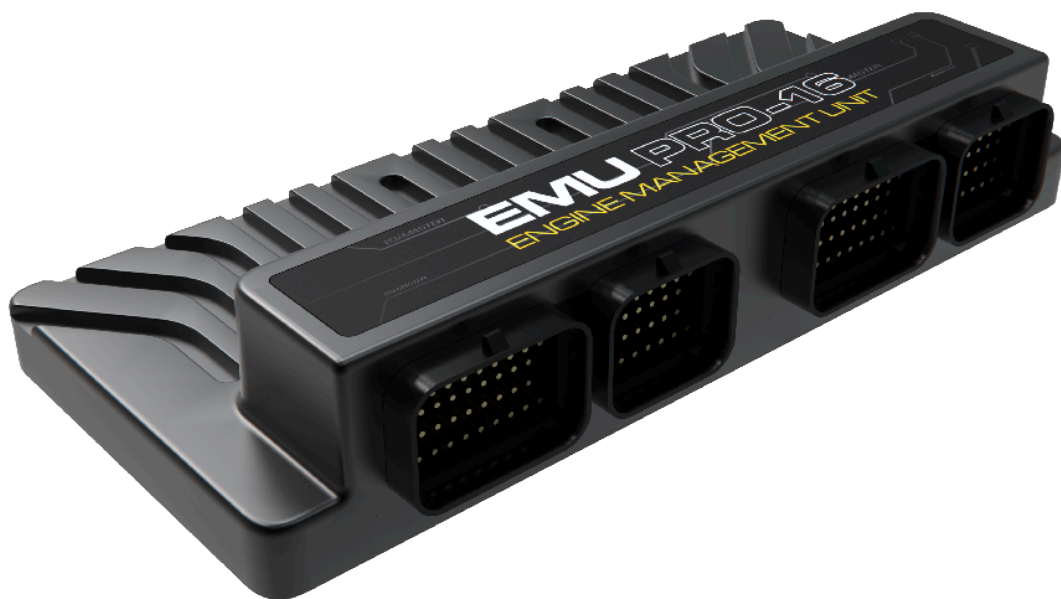
HOW-TO

How-to Import/Merge Projects in EMU PRO

Document version: 1.0

Software version: 230.5 or later

Published on: 31 March 2026



1. Description

Merging projects enables you to pick specific items from one project and integrate them into another.

In the document, the project you're currently working on will be named 'base'. The project you want to load the items from, will be called 'incoming'.

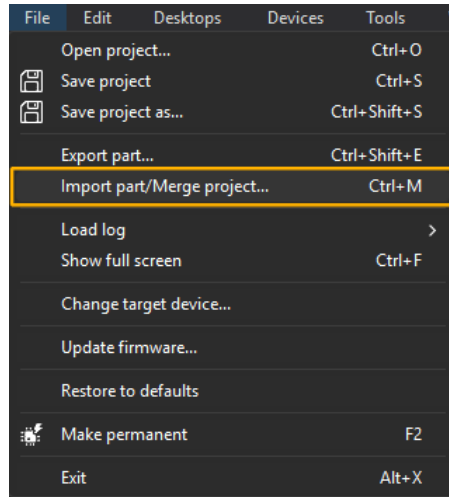
All items from the *Smart grid* and *Project tree* can be merged between projects. This means all of the following:

- Parameters
- Tables
- Inputs configuration
- Outputs configuration
- Logging frequencies
- CANbus Receive Frames
- CANbus Keyboards
- Timers
- Numbers
- Logical Functions
- CANbus Transmit Frames
- Groups

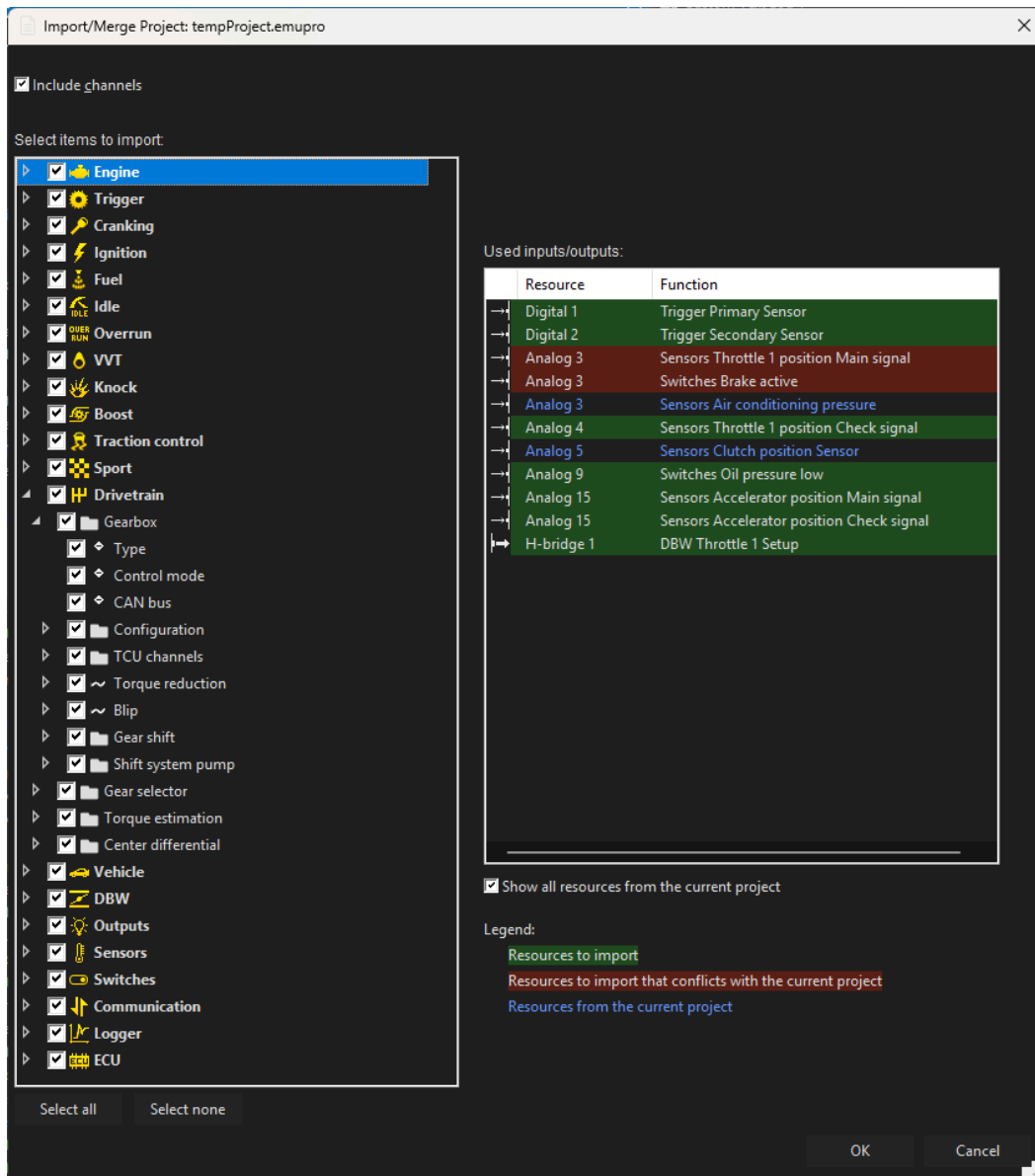
A project part file (.emupropart) has the same structure as a .emupro project file, but contains only selected items from the project (e.g. only Gearbox calibration or only selected elements of the *Project Tree*).

Such a file can be created by selecting **File / Export part**. It can be later imported in the same way as a standard .emupro project file.

To merge a project, select **Import part/Merge project** from the main menu, press **Ctrl+M**, or click the corresponding icon in the main toolbar 



After selecting the incoming project or part file, a dialog window will appear, displaying all items from the incoming project available for merging:



On the left, there is a list of all items available for merging. The selected items will be applied to the *Smart Grid* configuration and added to the *Project Tree* as additional custom configurations.

On the right, there is a list of resources (inputs and outputs) used in the incoming project. You can also view the resources currently used in the base project for comparison.

If any inputs or outputs from the incoming project are already in use in the base project, they will be highlighted in red to indicate a conflict.

After selecting individual items or choosing all using the *Select All* button, confirm your selection by clicking *OK*.

After confirming the merge, a dialog will appear allowing you to resolve these conflicts. You can choose to overwrite the existing resources with those from the incoming project or keep the current ones and skip merging the conflicting items.

2. Resolving potential conflicts

Resource assignment conflict (output, input, etc.)

If a resource (input, output, lambda controller, etc.) is used in a different way in the base project and in an incoming project, the software will notify the user about a conflict. The user can choose to:

1. Override the resources used in the base project and use the incoming project settings. This will unassign the resources from the base project.
2. Skip the resources used in the incoming project. The user will have to define them manually.

Name conflict

A name conflict occurs when an incoming element has the same name as an element in the base Project Tree. In this case, the incoming element will be renamed by adding "2" at the end.

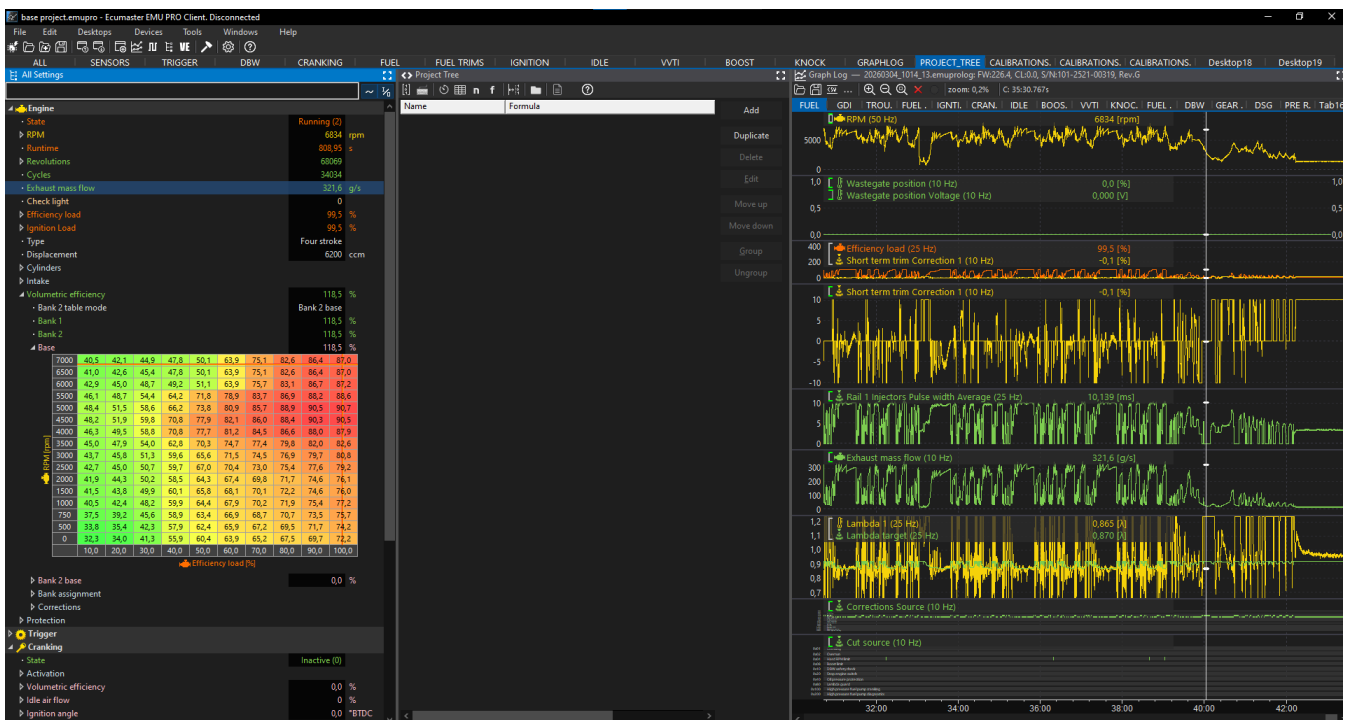
3. Examples

3.1. Example 1 - merging items from another project

We have prepared 5 CAN Receive frames in one project called *incoming.emupro*. We would like to use these frames in another project as well. For example, we may have a similar CAN bus setup in another car that we want to replicate.

In our project called *base.emupro*, the tune is complete, but it lacks the CAN bus setup from the project called *incoming.emupro*.

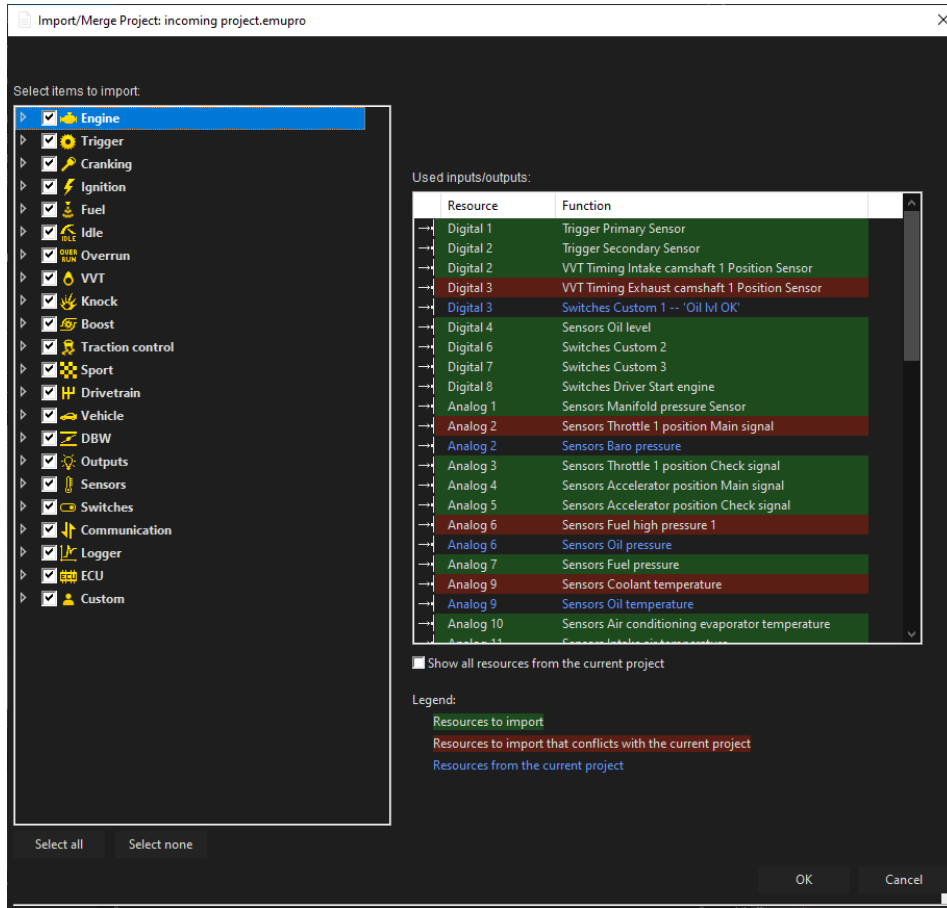
First, open the base project.



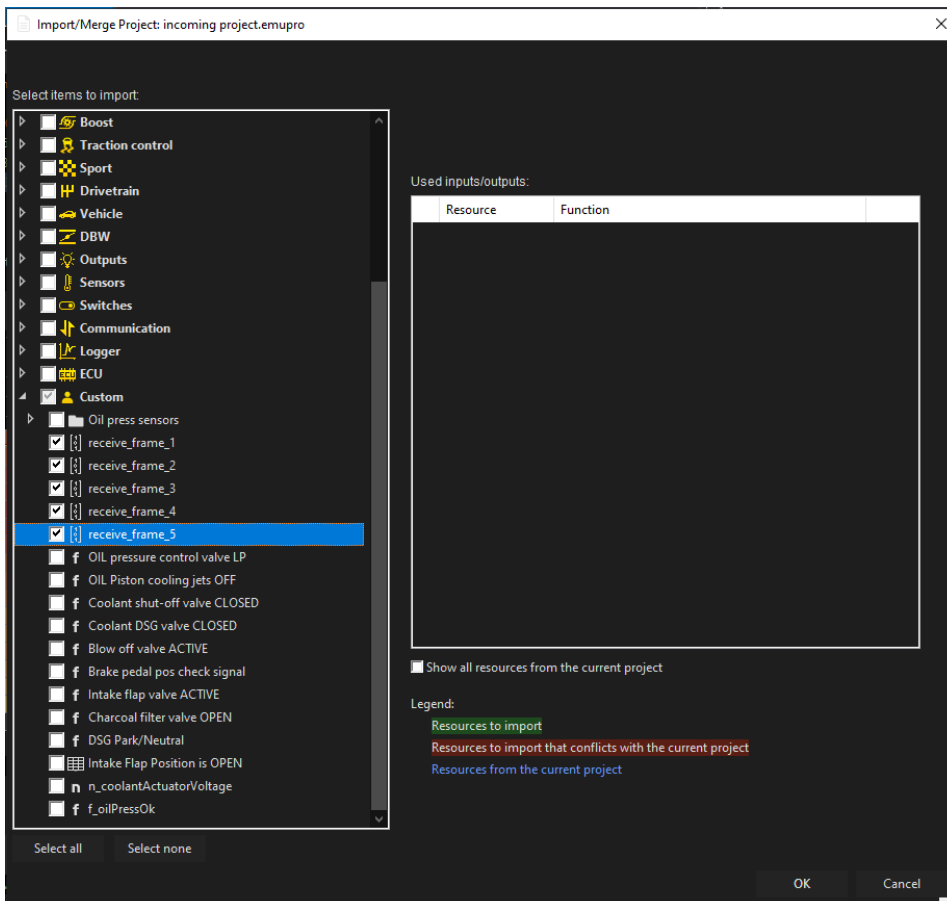
As shown, the tune is ready, but the *Project Tree* does not contain any CAN Receive frames that we want to import.



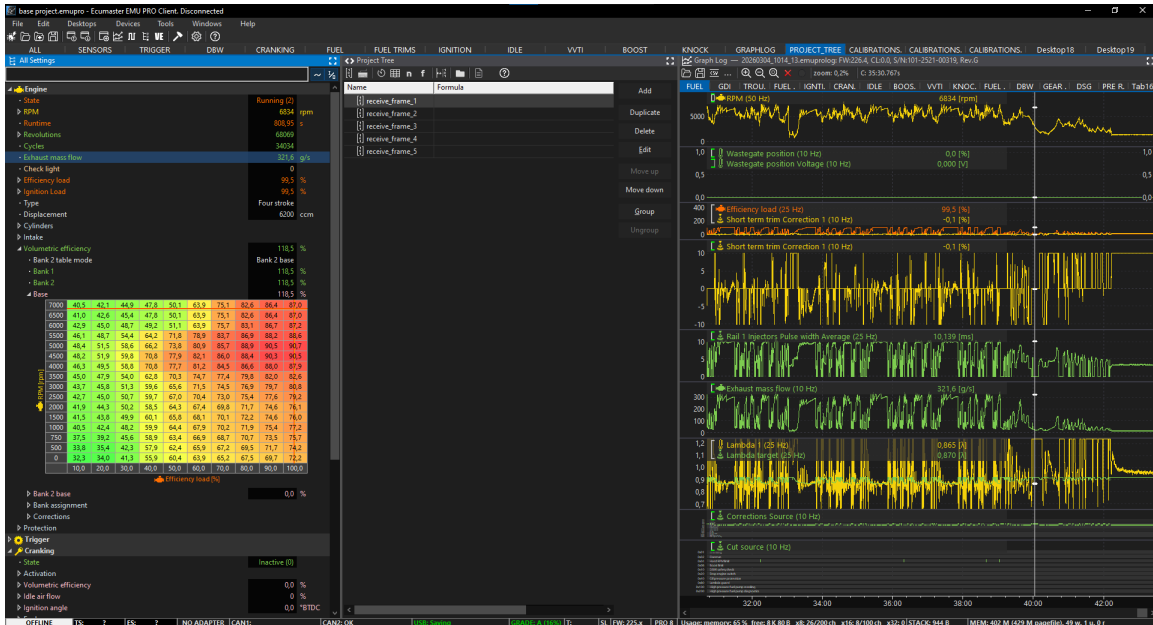
Select **Merge** and choose *incoming.emupro* from the available list.



We only want to merge *Project Tree* items, which are visible under **Custom** on the left-hand side.



Select the 5 receive frames to merge – *receive_frame_#*.
Then press OK.



The receive frames are now available in the *base.emupro* project. No other settings were changed.

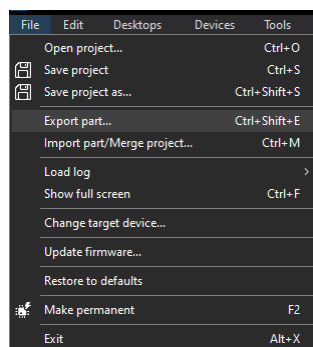
3.2. Example 2 - exporting and importing part of a project

This time, we want to share only selected parts of our project with another EMU PRO user. We will assume that we want to share the following:

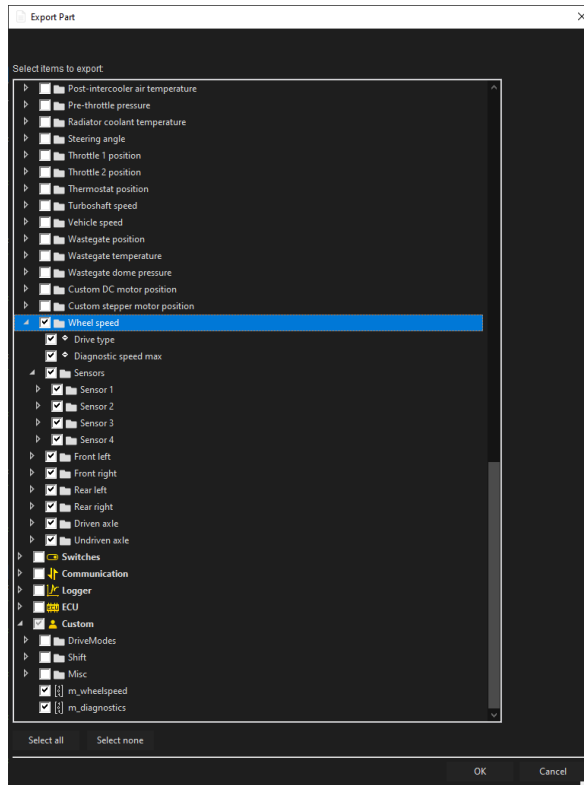
- 2 CANbus Receive Frames containing wheel speed data
- Wheel speed sensor calibration using the received data

As we do not want to share the full project (containing all parameters, tables, and calibrations), we will use the option to export only part of the project.

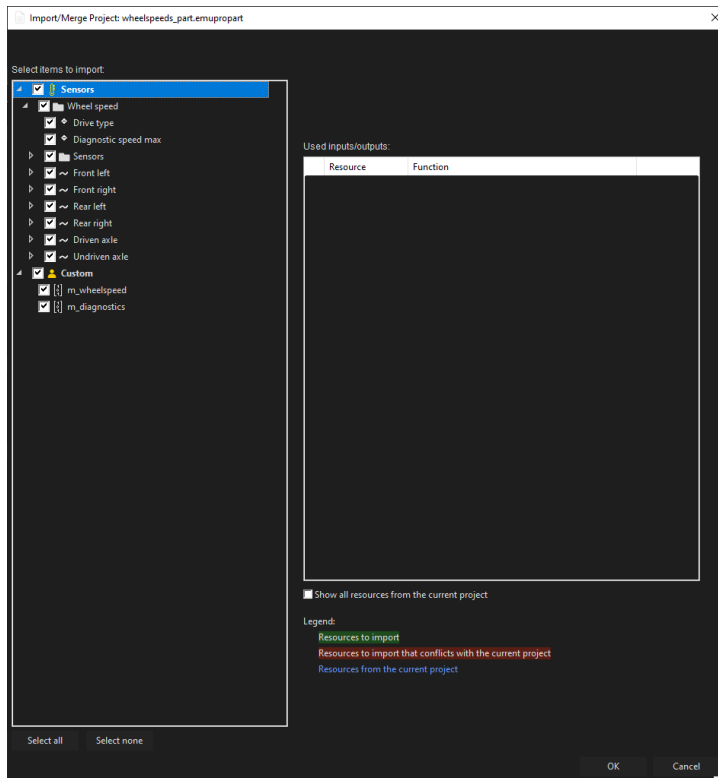
Select **File / Export part...**



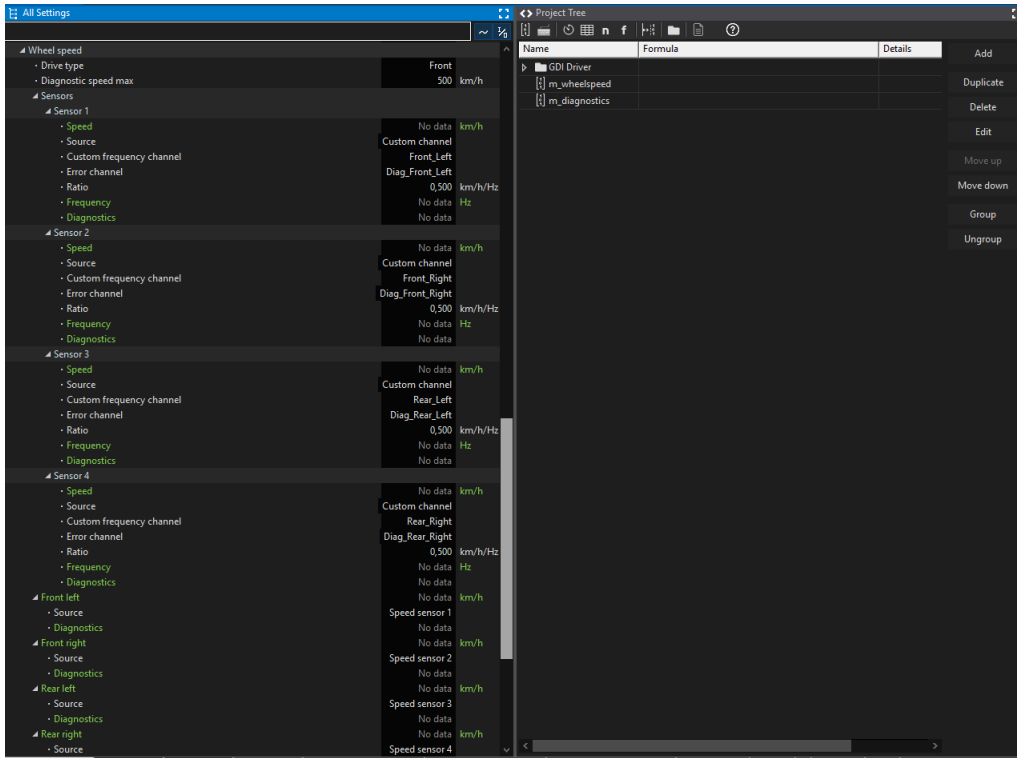
A dialog window will appear, allowing you to select specific items from the project to be shared. The resulting file will be named **XXX.emupropart**. The **.emupropart** extension indicates that this is not a complete **.emupro** project file.



When importing the **.emupropart** file, only the items included in the part file are visible.



The receive frames and wheel speed sensors configuration are now available in the base project. No other settings were changed.



4. Document history

Version	Date	Changes
1.0	2026.03.31	Initial release