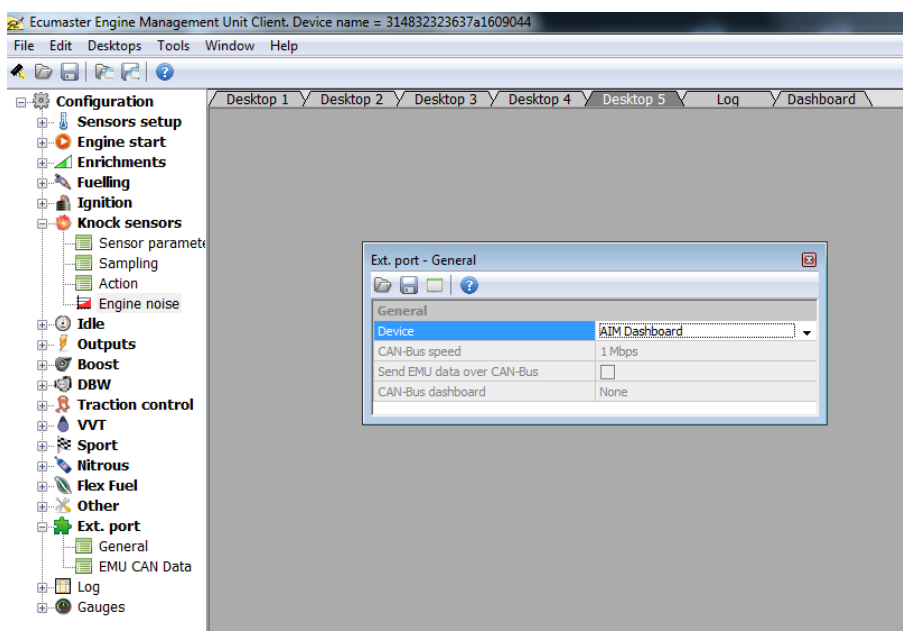


## EMU Bluetooth Module connection manual

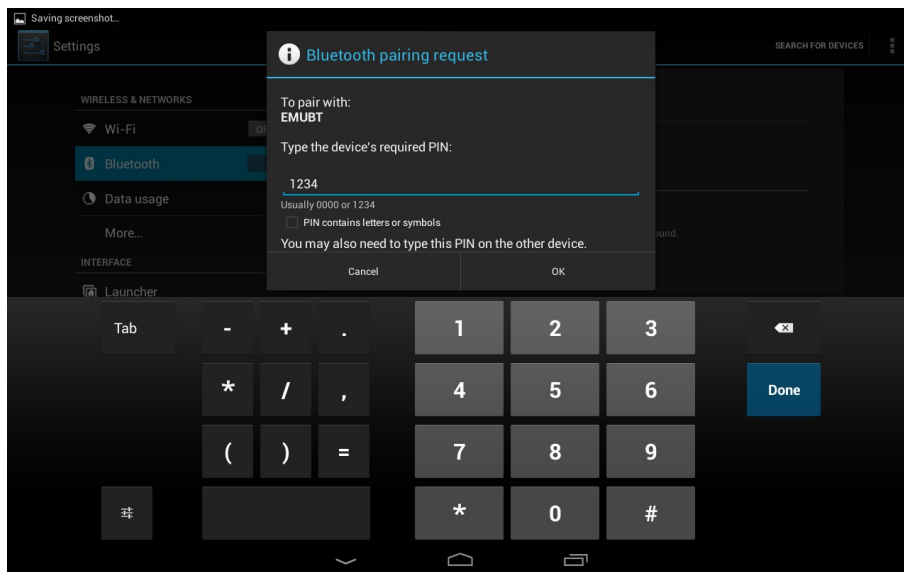
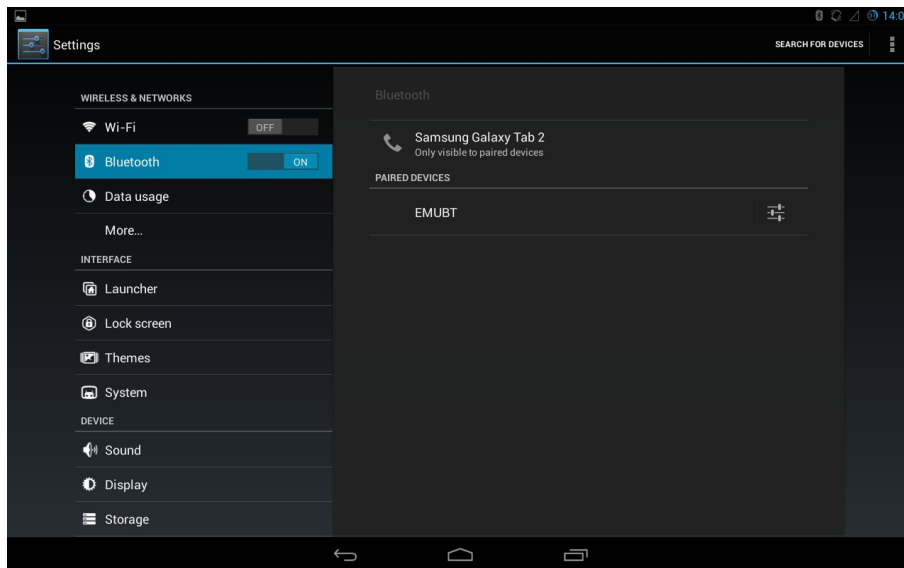
- 1) Connect Bluetooth module to extension port in the back of the EMU unit. Light on the module should flash constantly.



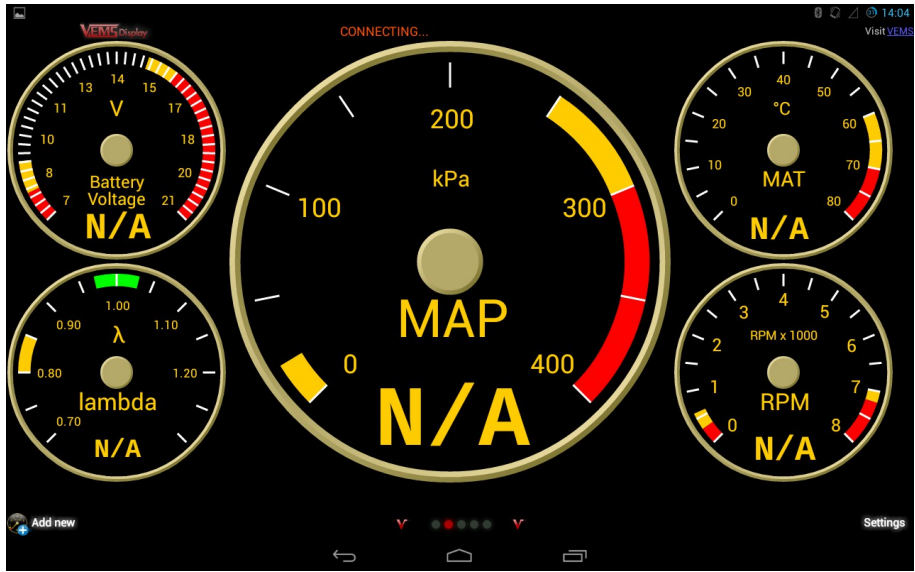
- 2) In Windows client open from configuration menu → ext.port and then choose General. On general settings choose Aim Dashboard Save settings to EMU memory by pressing F2 or clicking memory icon. Turn EMU off and turn on again.



- 3) Open Settings panel on Yours device with Android OS. Turn on Bluetooth and search for devices. System should find EMUBT then click for pairing. System Will Ask for pin password. The pin password is 1234 and then click OK.



- 4) Open VemsDisplay application. Open settings → Communication Settings → Bluetooth Settings and choose paired BT device (for example EMU 20:14:04:13:20). Go to main screen, if everything is set up correctly application should connect in few seconds. During communication LED on BT module stop flashing and is turned on.



Saving screenshot...

Firmware Info  
Not available

Communication  
Enabled

Communication Mode  
Bluetooth

Communication Settings  
Communication Settings

Device Settings  
Device: AIM Protocol: AIM

GUI Settings

Edit Mode

Disable screen saver

Power Saving Mode  
Power Saving Mode

Restore databases

Saving screenshot...

V Communication Settings

Wi-Fi Settings  
Wi-Fi Settings

Bluetooth Settings  
Bluetooth Settings

